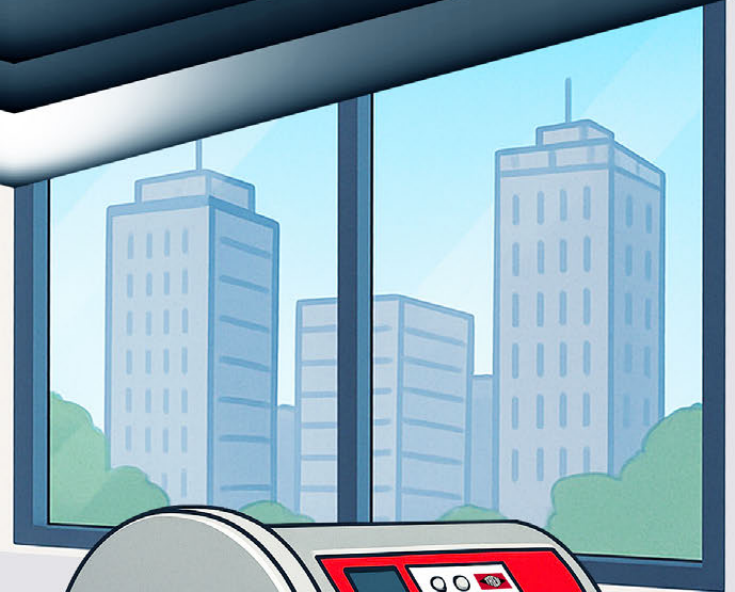
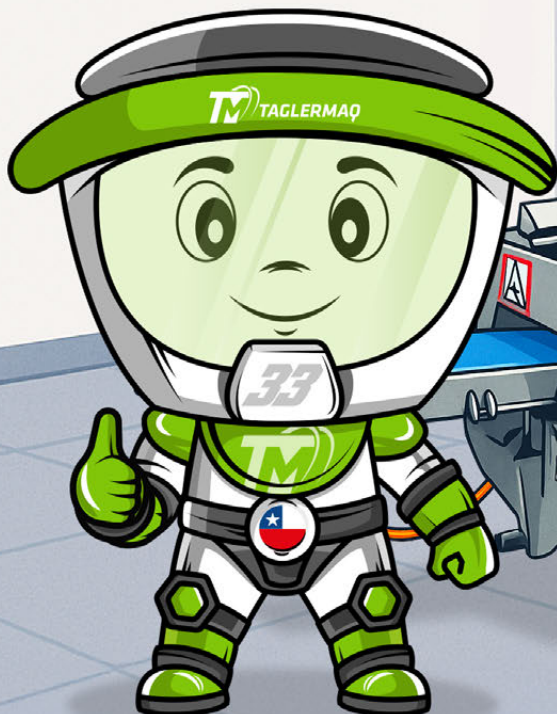




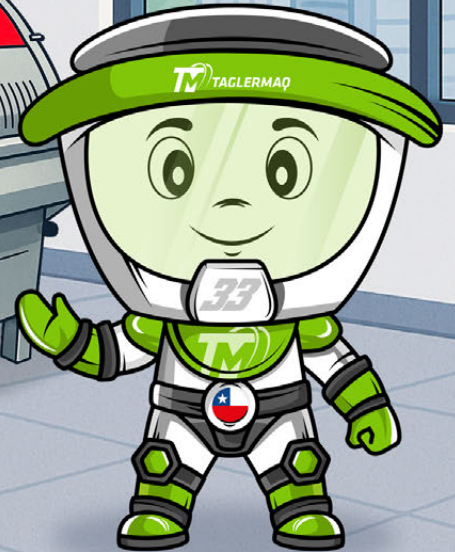
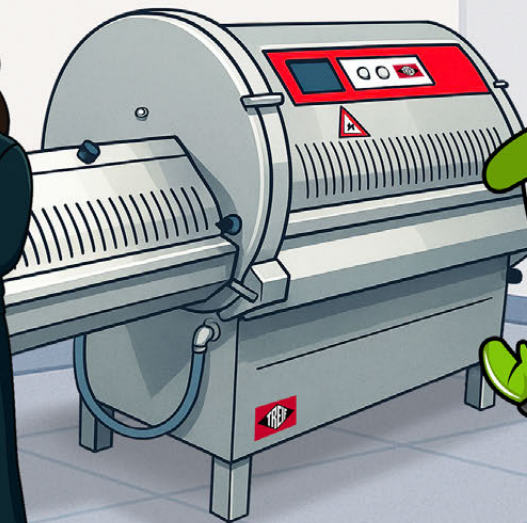
MAQUITO

MAQ ACADEMY: CLASS 4

BLADE REMOVAL AND REPLACEMENT IN THE PUMA
1100 EB PORTIONER, TREIF MAREL



Technical Training – Intermediate Level at Taglermaq’s offices, led by Maq, who guides the SAT team through the blade removal and replacement process on the Treif Marel Puma 1100 EB Portioner.



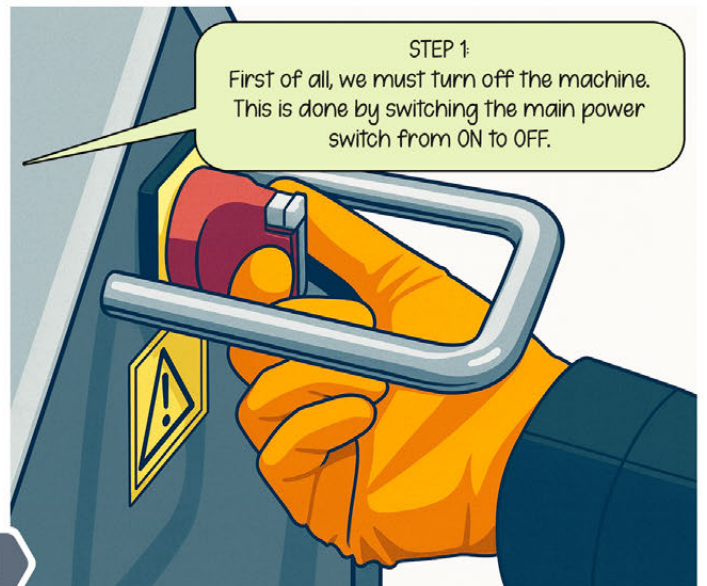
Welcome, SAT team!
Today we will review the protocol for removing and replacing the blade on the Treif Marel Puma 1100 EB model.

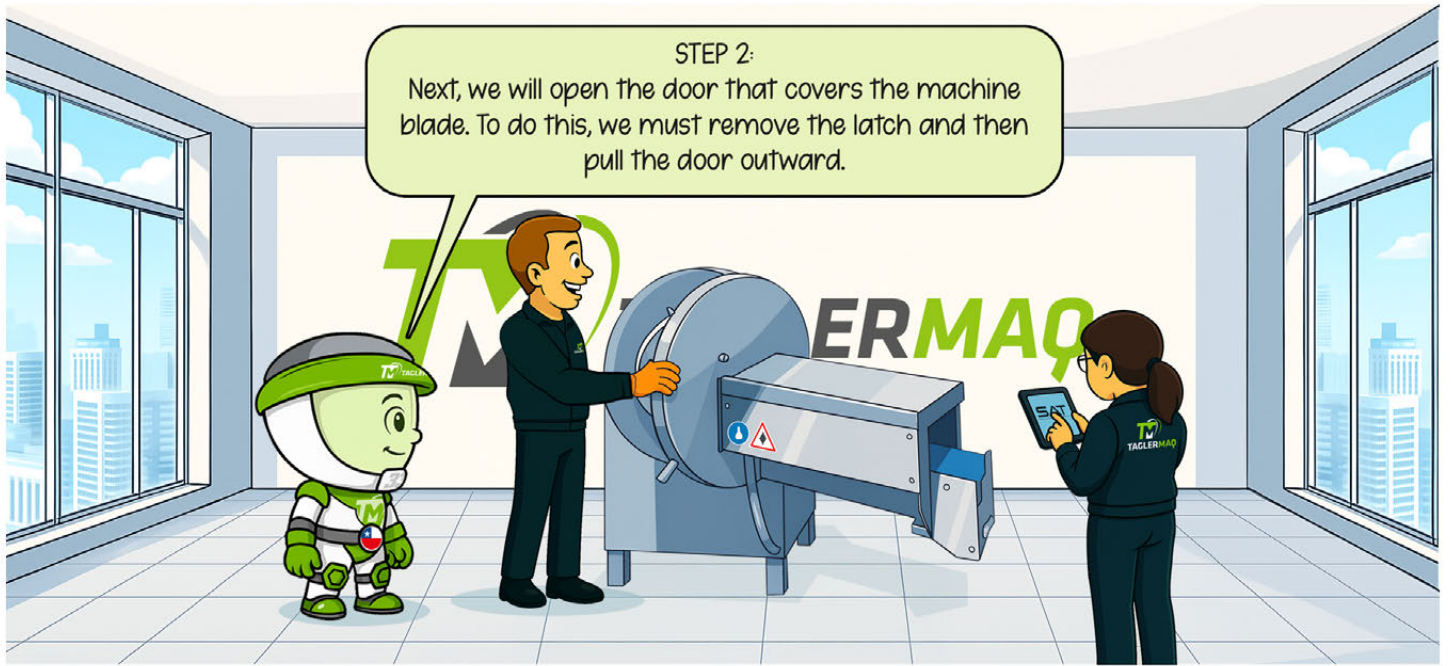
Hi Maq!



1

STEP 1:
First of all, we must turn off the machine.
This is done by switching the main power switch from ON to OFF.

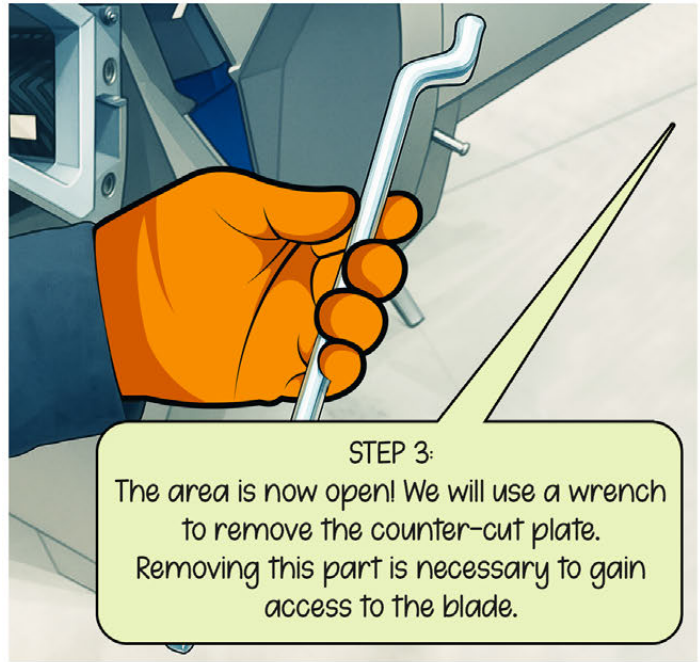




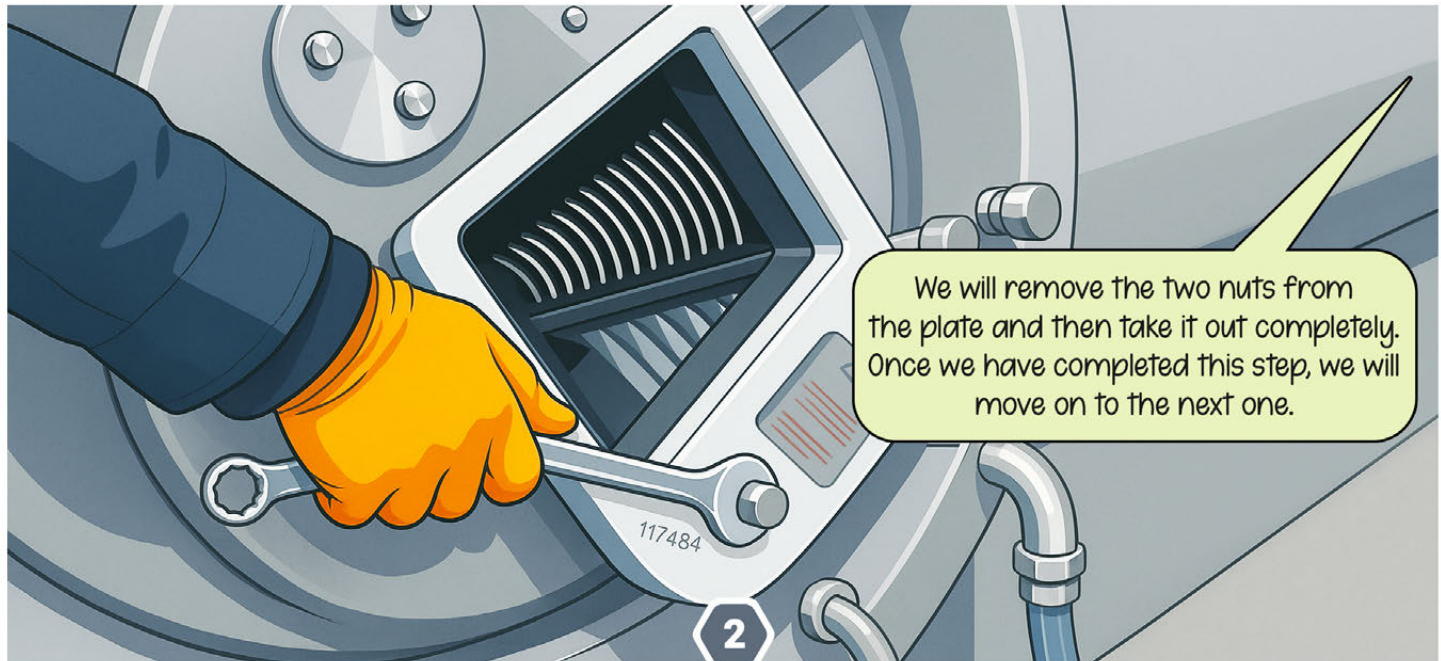
STEP 2:
Next, we will open the door that covers the machine blade. To do this, we must remove the latch and then pull the door outward.



It is very important to open the door completely until the latch engages. This keeps the door from closing.



STEP 3:
The area is now open! We will use a wrench to remove the counter-cut plate. Removing this part is necessary to gain access to the blade.



We will remove the two nuts from the plate and then take it out completely. Once we have completed this step, we will move on to the next one.



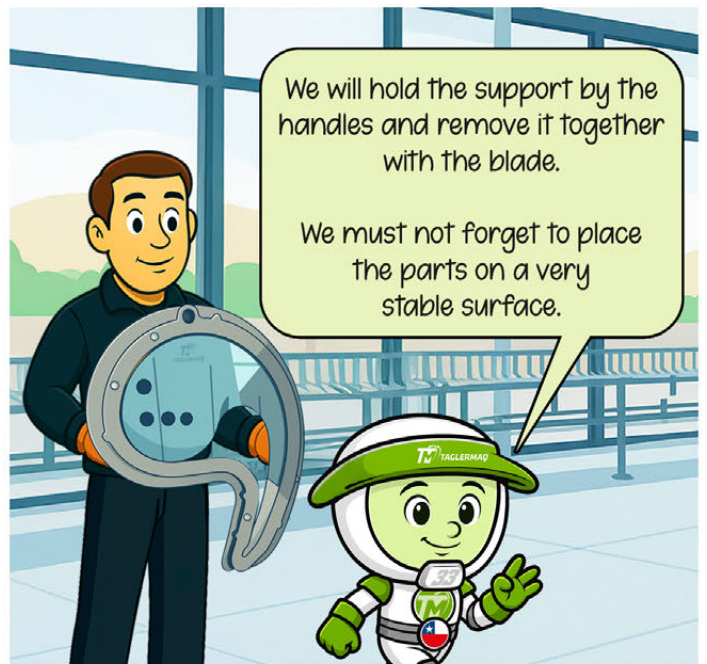
STEP 4:
Perfect! Now we will use the support for safe removal. We will take this tool and position it over the blade.



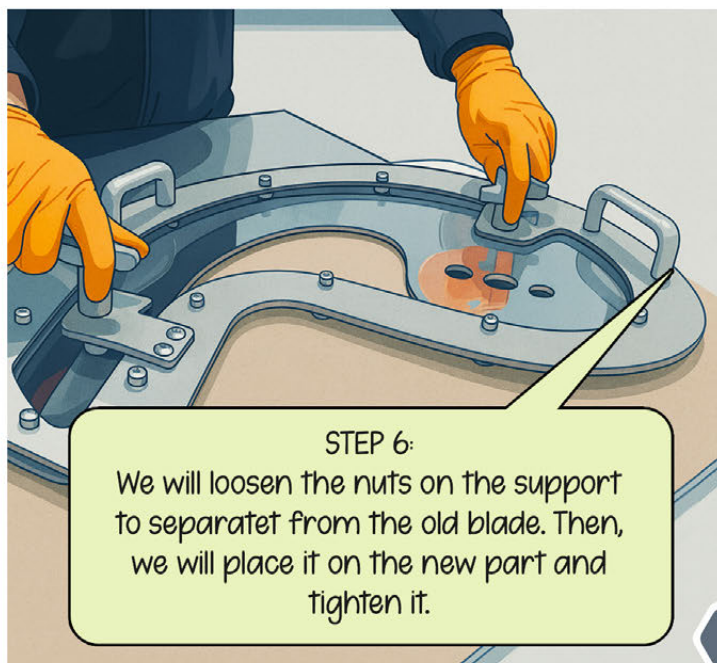
We tighten the two wing nuts so that both parts are secured firmly in place.



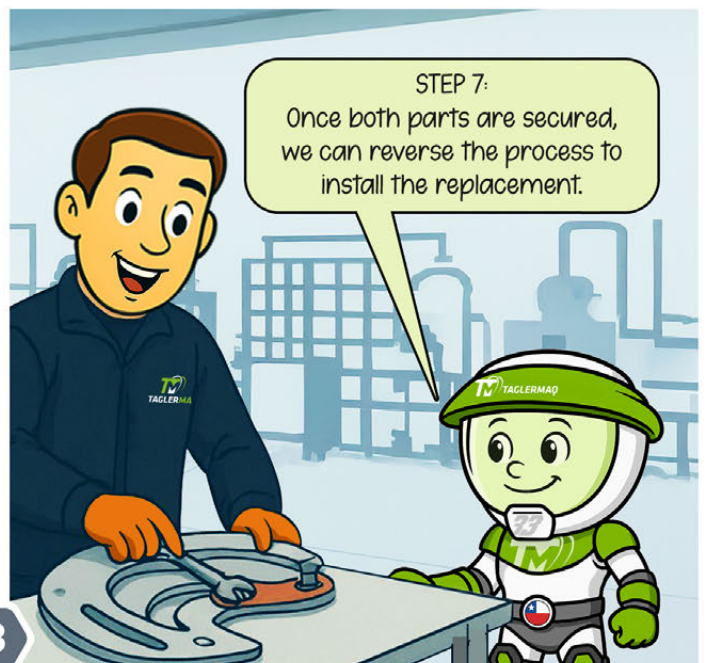
STEP 5:
Once this is done, we can remove the blade. We will take off the fastening nuts and then the steel cover underneath.



We will hold the support by the handles and remove it together with the blade.
We must not forget to place the parts on a very stable surface.



STEP 6:
We will loosen the nuts on the support to separate it from the old blade. Then, we will place it on the new part and tighten it.

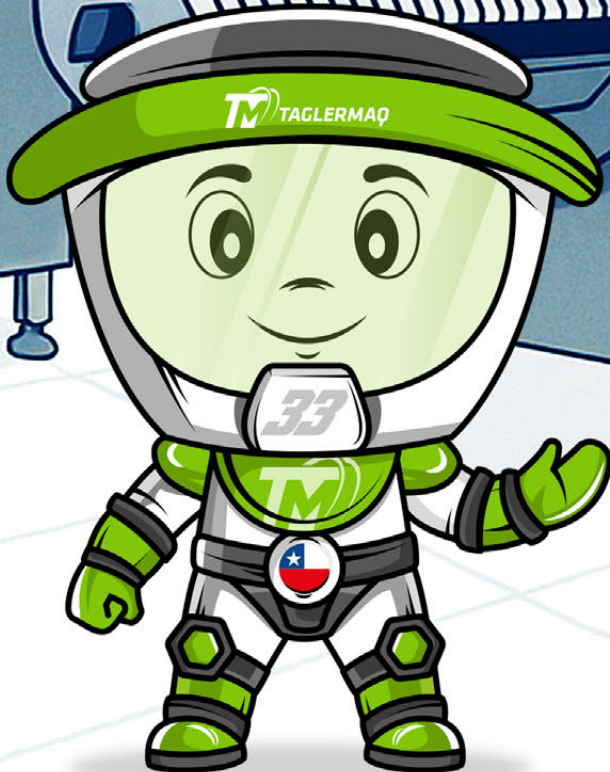


STEP 7:
Once both parts are secured, we can reverse the process to install the replacement.

Replacing parts on time will allow you to get the full productive potential from the machine, while also preventing future damage.

Great job, SAT team!

Thank you very much, Maq!





MAQUITO³³

MAQ ACADEMY: CLASS 4

BLADE REMOVAL AND REPLACEMENT IN THE PUMA
1100 EB PORTIONER, TREIF MAREL

IDEA AND SCRIPT
TAGLERMAQ MARKETING DEPARTMENT
SAT TECHNICAL ASSISTANCE SERVICE

DESIGN AND ILLUSTRATIONS
TAGLERMAQ MARKETING DEPARTMENT
ARTIFICIAL INTELLIGENCE

EDITION 5 · YEAR 2025



www.taglermaq.cl

 Avenida Presidente Germán Riesco 8736-1, Renca, Santiago de Chile