

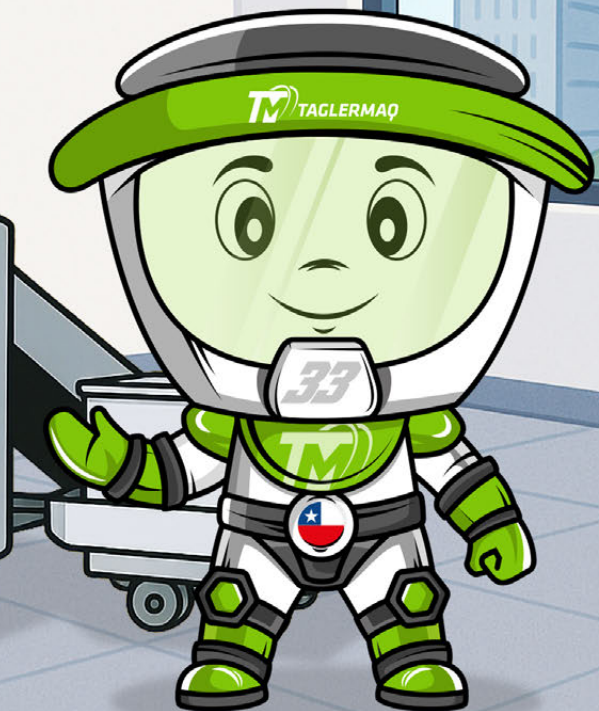
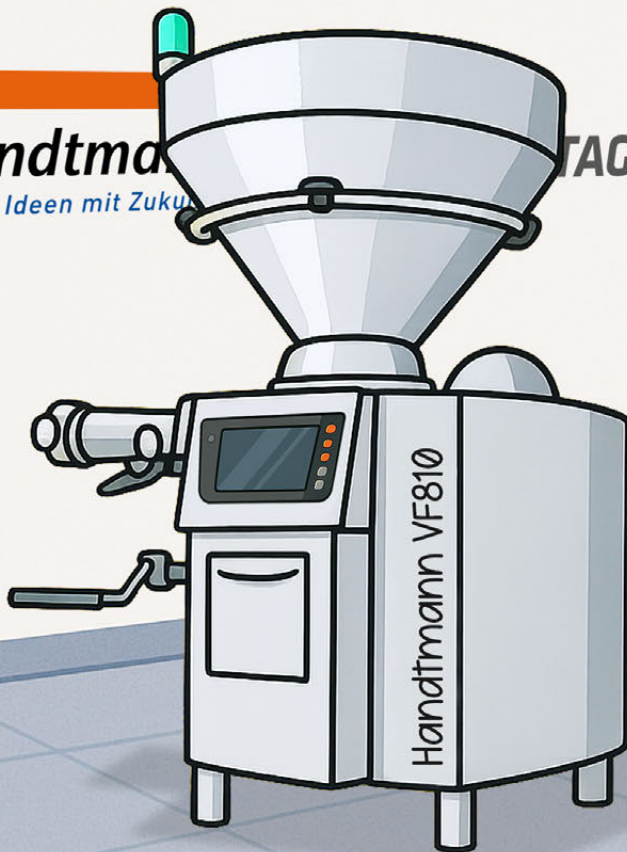
MAQUITO **33**

MAQ ACADEMY: CLASS 2

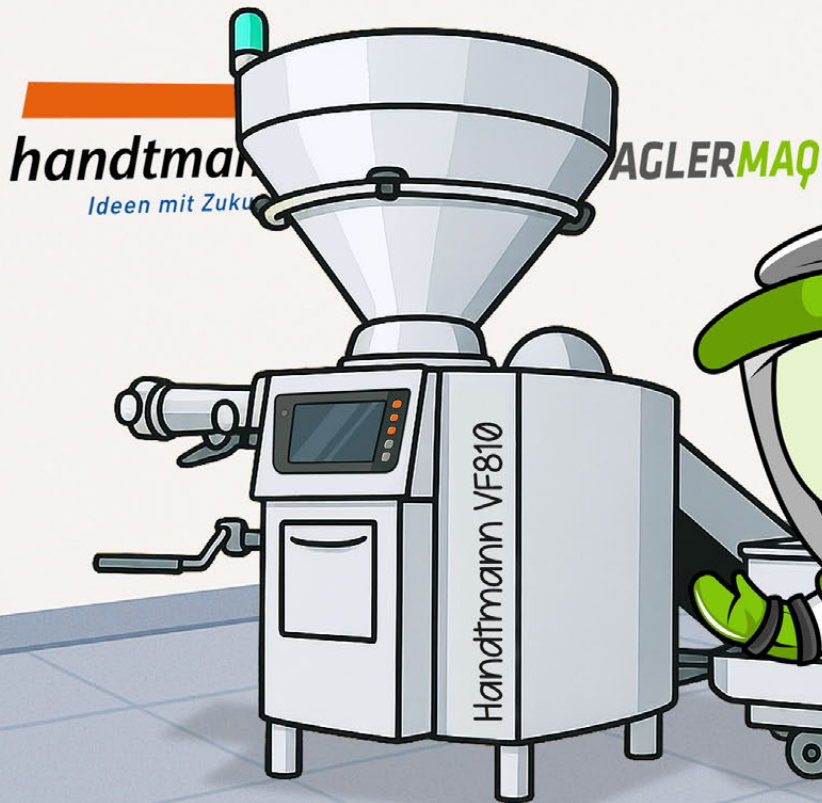
ASSEMBLING THE MEAT PUMP IN THE
VF810 STUFFER

handtma
Ideen mit Zukunft

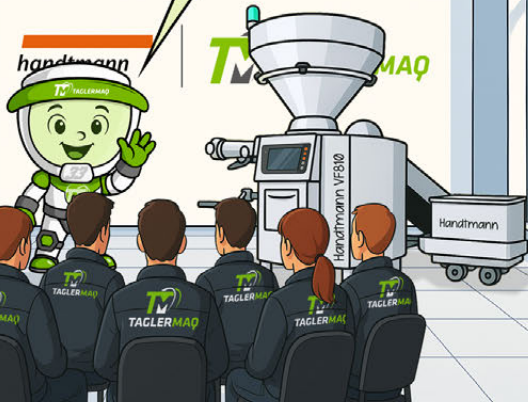
TAGLERMAQ



Technical Training — Intermediate Level at Taglermaq's offices, led by Maq, who will guide the SAT team through the process of assembling the meat pump, or transport mechanism, for the VF810 stuffer.

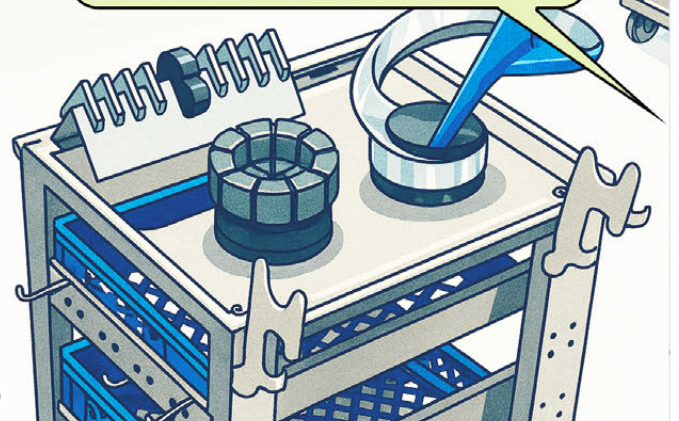


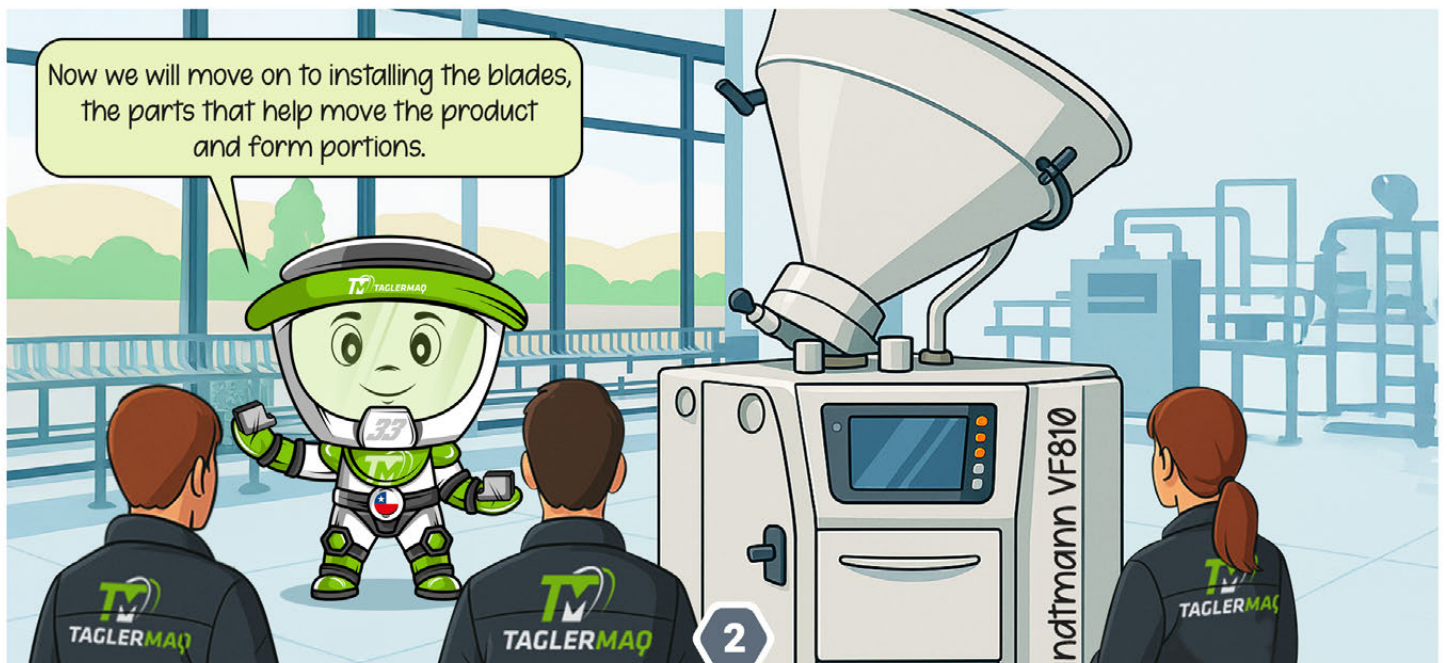
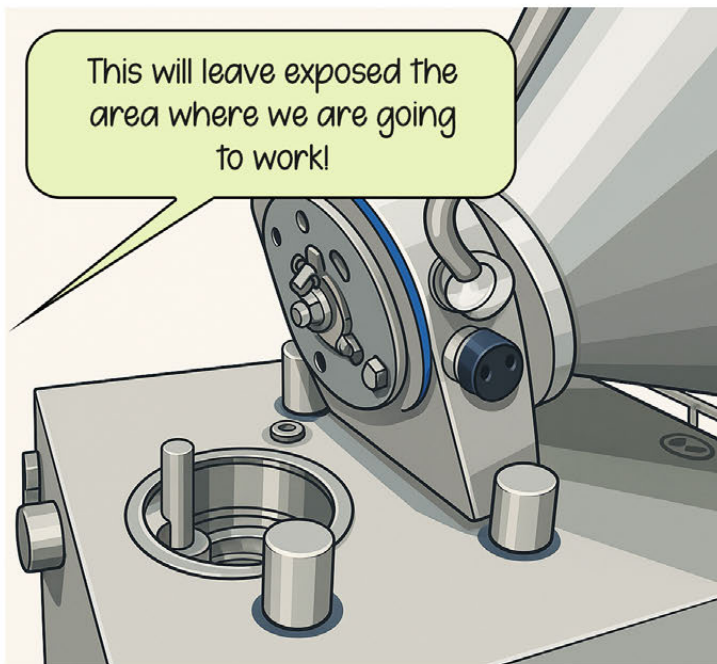
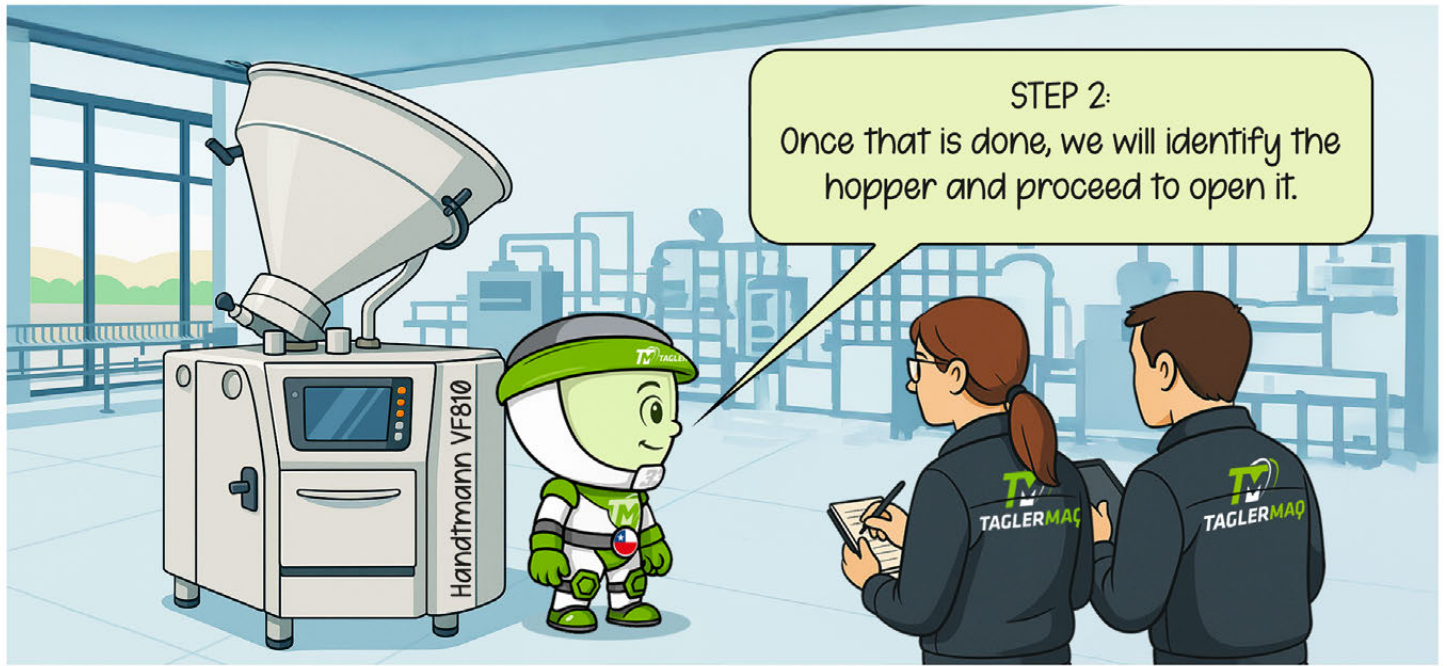
Welcome, SAT team!
Today we will review the assembly protocol for the meat pump, or transport mechanism, in the Handtmann VF810 stuffer.

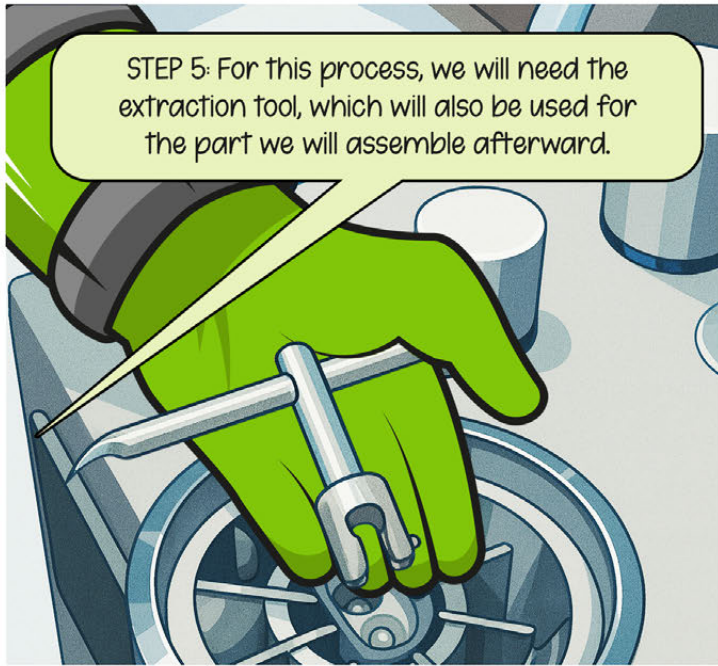


STEP 1:

First, let's remember that the parts and components that make up the meat pump system are the rotor, the suction eccentric, and the blades.







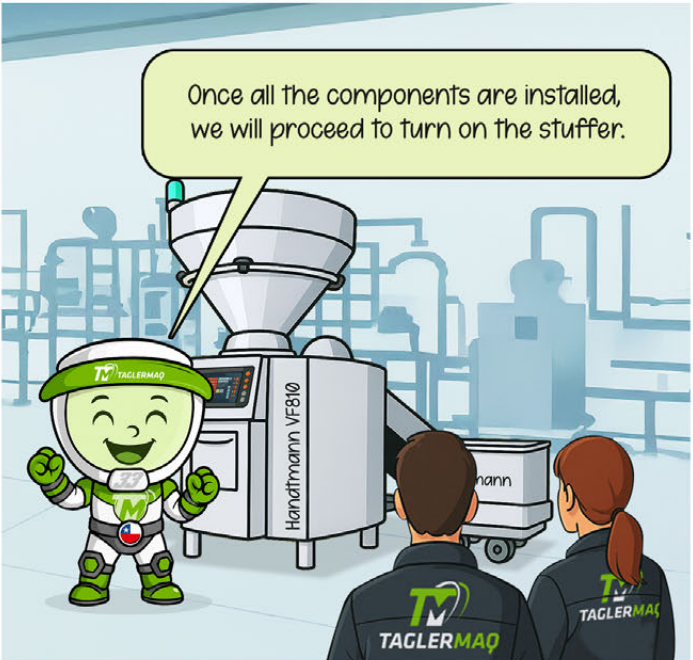
STEP 5: For this process, we will need the extraction tool, which will also be used for the part we will assemble afterward.



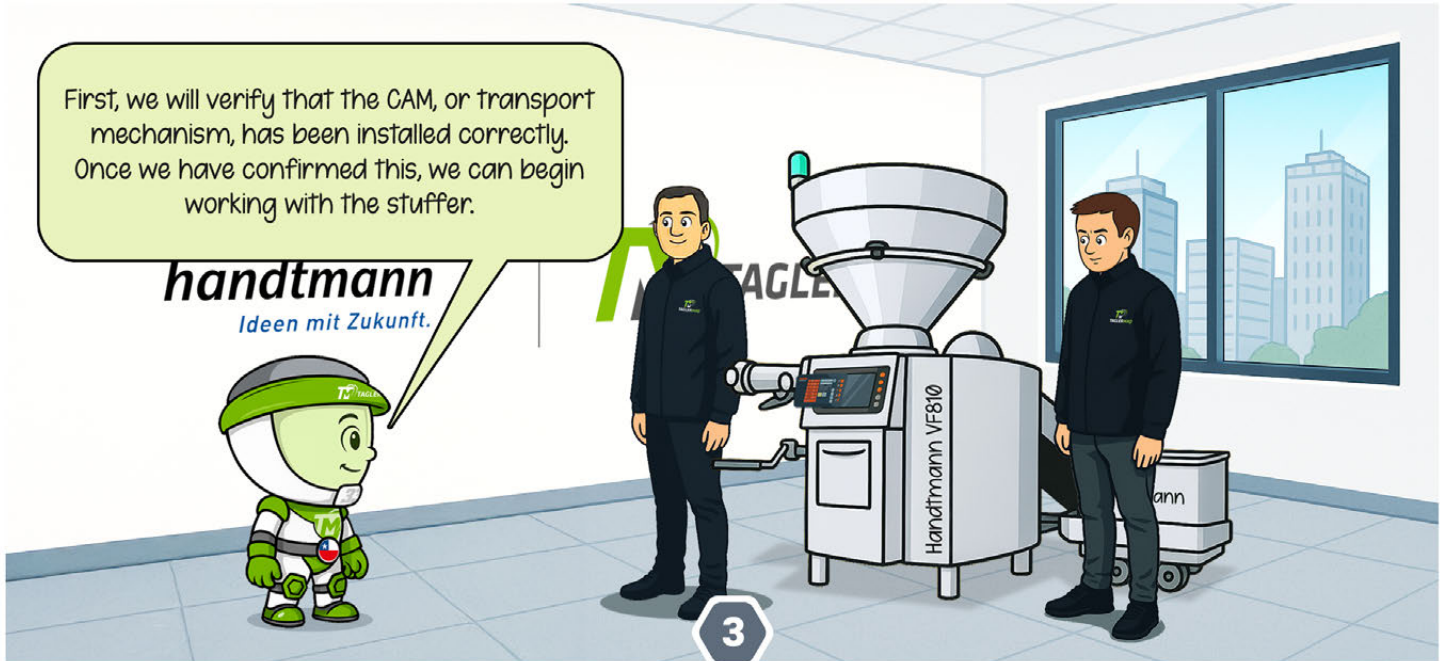
STEP 6: Now we continue with the suction eccentric. It is very important that this part is properly aligned.



Finally, with SAT's help, we will install the feed spiral. This part moves the meat through the hopper and into the meat pump.

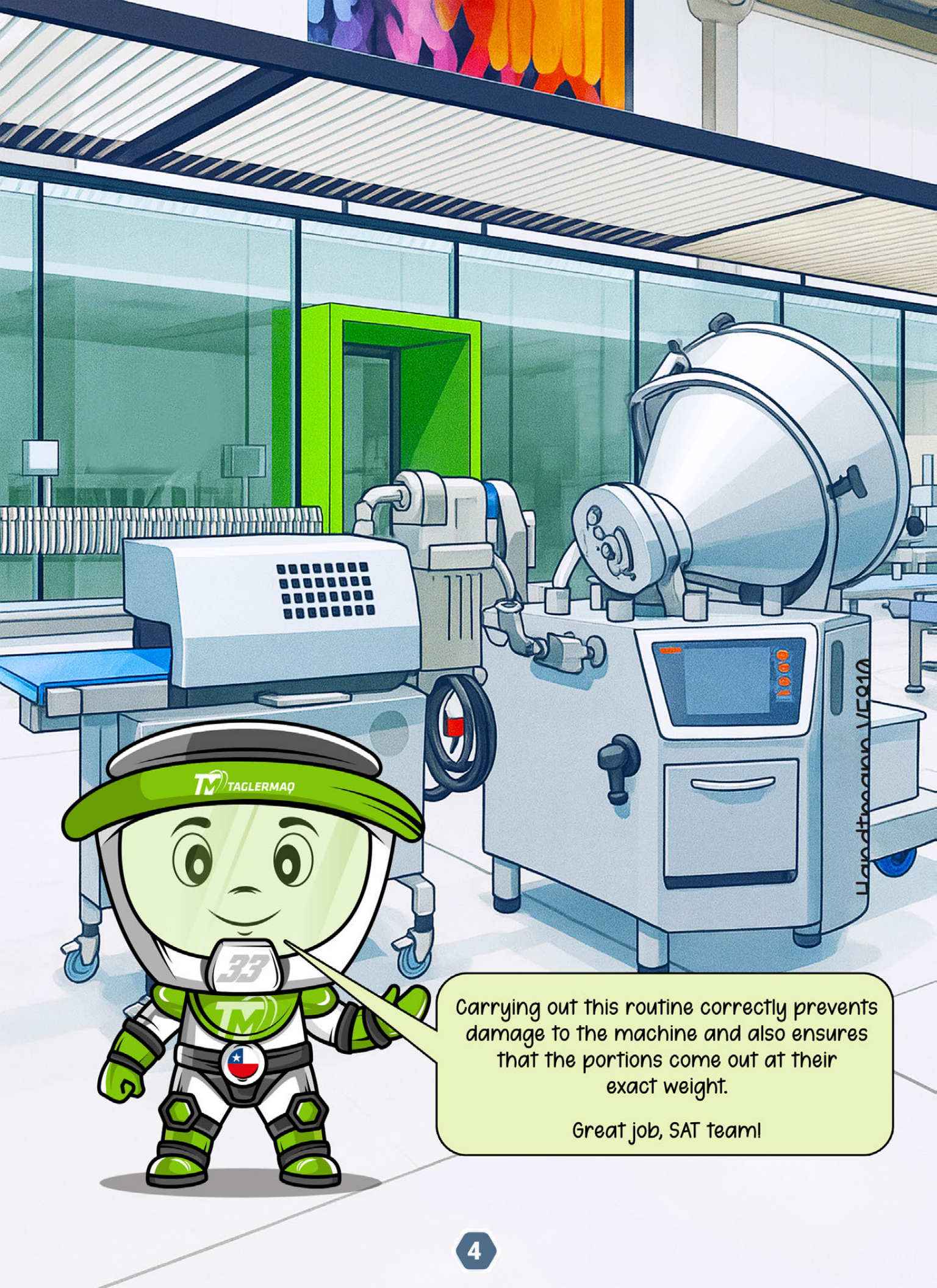


Once all the components are installed, we will proceed to turn on the stuffer.



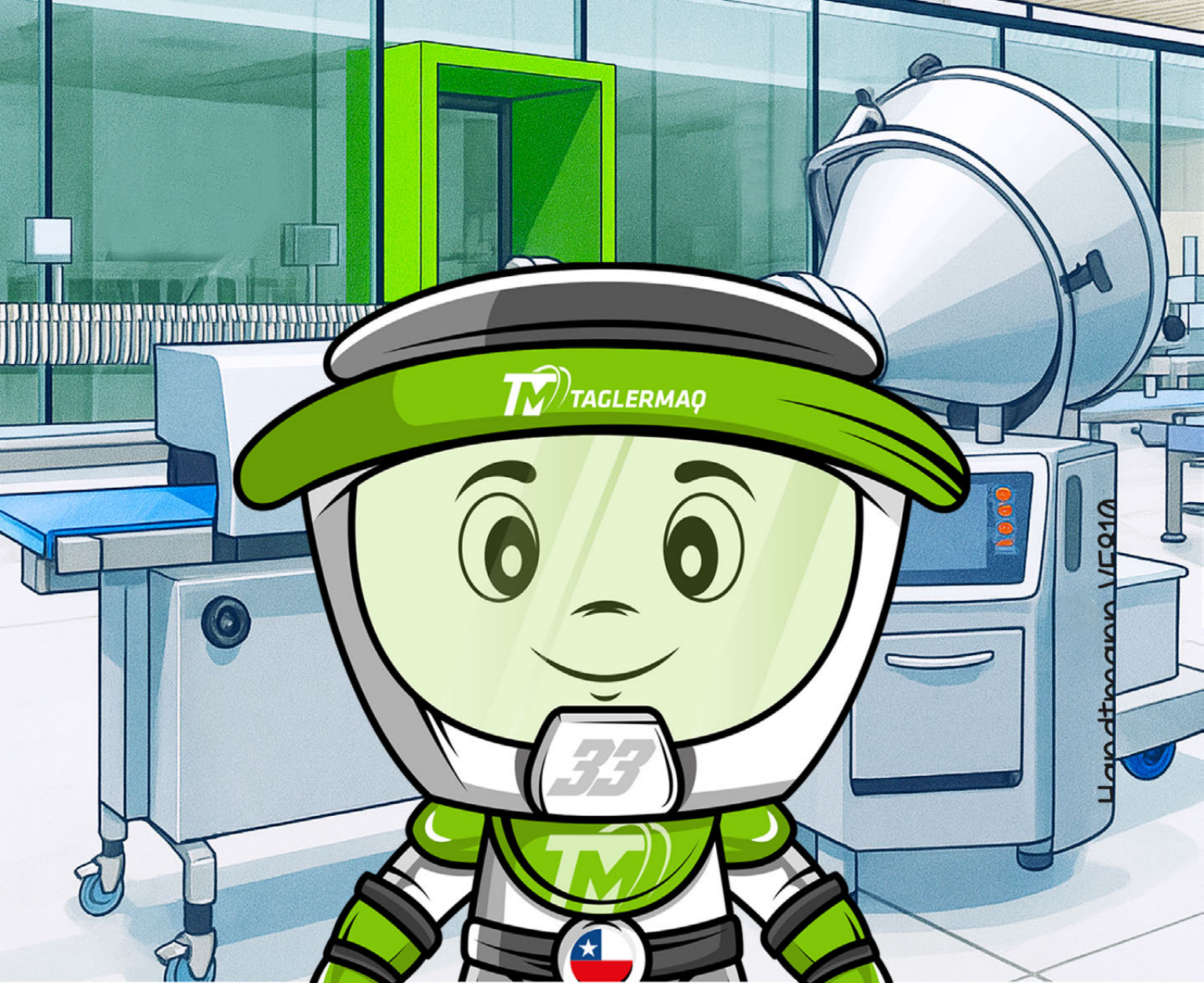
First, we will verify that the CAM, or transport mechanism, has been installed correctly. Once we have confirmed this, we can begin working with the stuffer.

handtmann
Ideen mit Zukunft.



Carrying out this routine correctly prevents damage to the machine and also ensures that the portions come out at their exact weight.

Great job, SAT team!



MAQUITO³³

MAQ ACADEMY: CLASS 2

ASSEMBLING THE MEAT PUMP IN THE VF810 STUFFER

IDEA AND SCRIPT
TAGLERMAQ MARKETING DEPARTMENT
SAT TECHNICAL ASSISTANCE SERVICE

DESIGN AND ILLUSTRATIONS
TAGLERMAQ MARKETING DEPARTMENT
ARTIFICIAL INTELLIGENCE

EDITION 3 · AYEAR 2025



www.taglermaq.cl

 Avenida Presidente Germán Riesco 8736-1, Renca, Santiago de Chile